

Appendix B

Maps

A collection of the planning maps found throughout the comprehensive plan.











- » Planning Area
- » Planning Area Inset
- » Transportation Facilities
- » Transportation Facilities Inset
- » Farmland Classification
- » Existing Land Use
- » Existing Land Use Inset
- » Development Limitations
- » Development Limitations Inset
- » Unofficial Zoning
- » Community Facilities and Services
- » Economic Development
- » Redevelopment Opportunities
- » Future Land Use
- » Future Land Use Inset



Planning Area

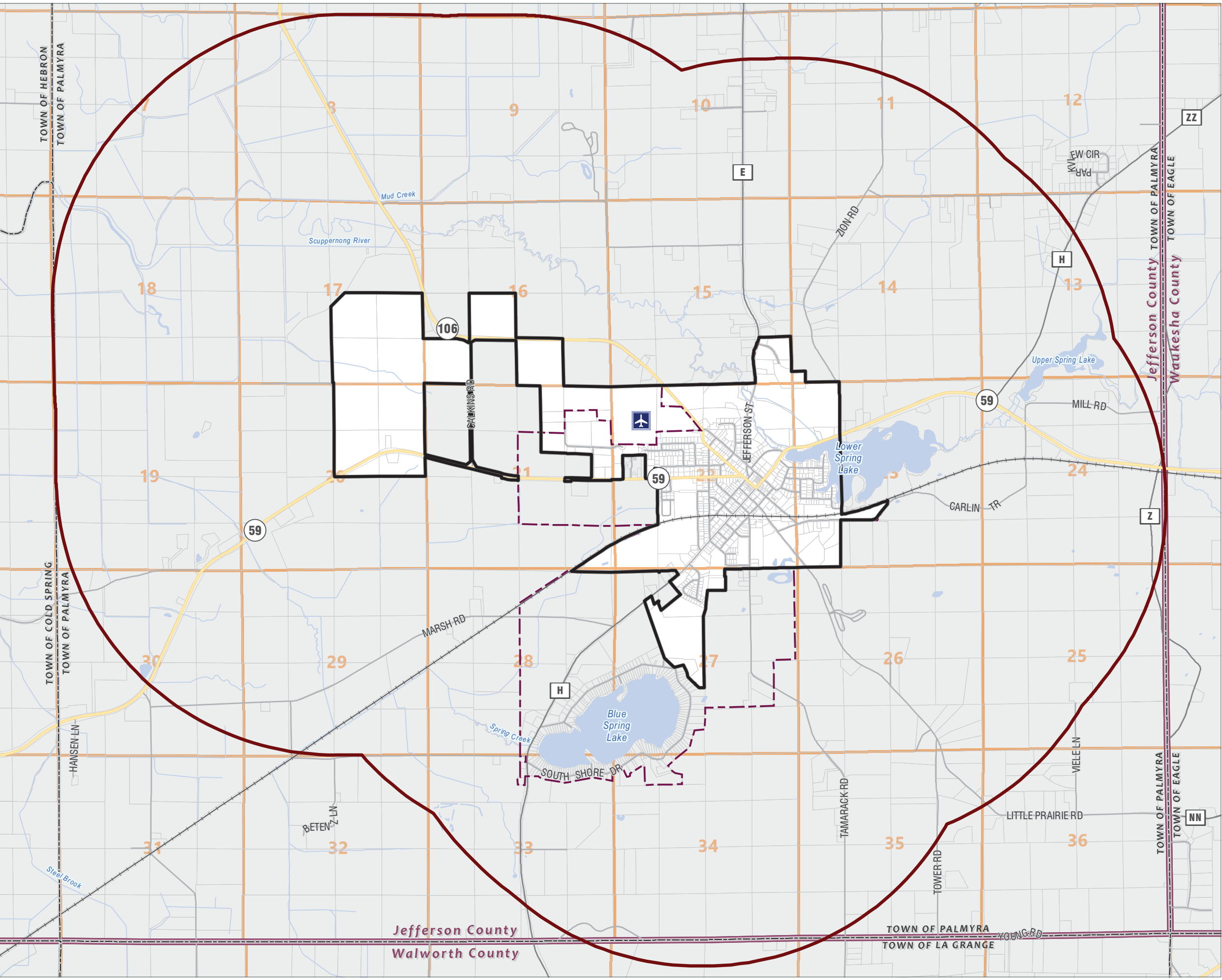
Comprehensive Plan
2018-2038

Village of Palmyra
Jefferson County, WI

-  Planning Area
-  Village of Palmyra
-  Town
-  County
-  Urban Service Area
-  Sections
-  Parcels
-  Waterbody
-  Railroad
-  Airport

Data Sources:
 Municipal Boundaries: Jefferson, Walworth and Waukesha Counties.
 Parcels: Wisconsin Statewide Parcel Dataset (V400)
 Waterbodies: USGS NHD
 Roads: Jefferson County and US Census
 Urban Service Area: Jefferson County

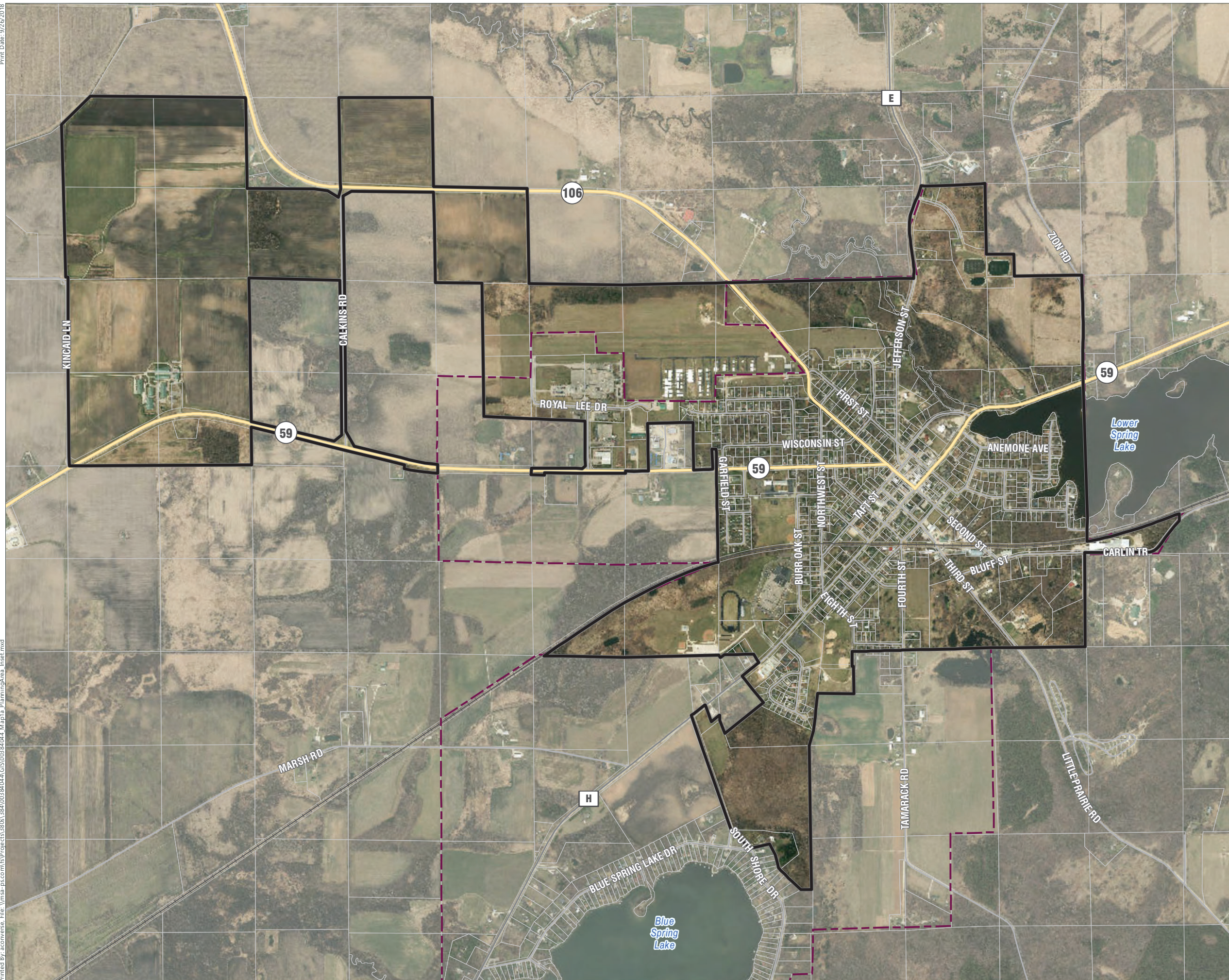
Print Date: 9/25/2018
 Printed By: sconnors, File: \\msa-fs.com\fs\Projects\3808\3808\384\003\8404\GIS\03\8404_Map1_PlanningArea.mxd



Planning Area Inset

Comprehensive Plan
2018-2038

Village of Palmyra
Jefferson County, WI



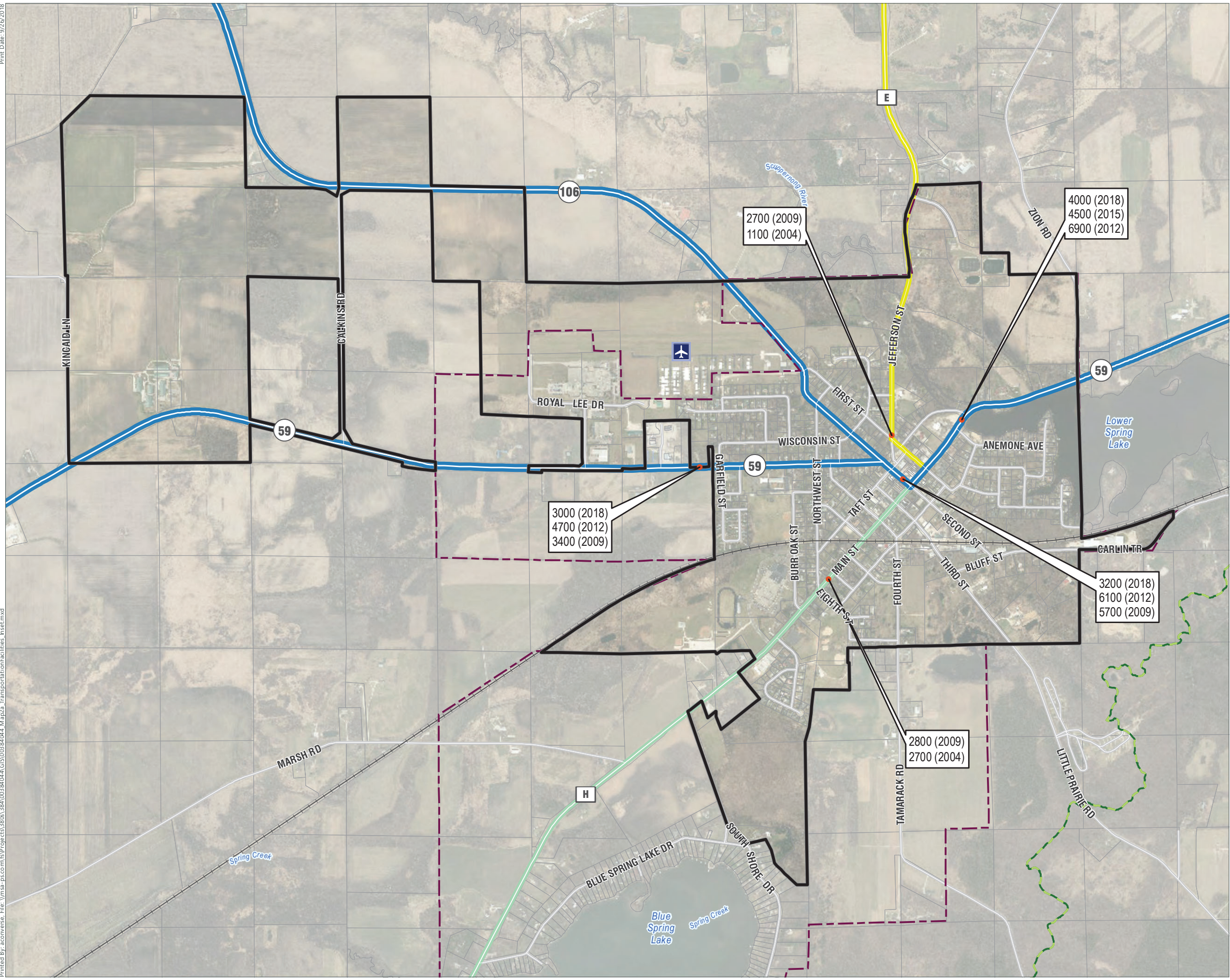
- Planning Area
- Village of Palmyra
- Town
- Urban Service Area
- Parcels
- Railroad

Data Sources:
 Municipal Boundaries: Jefferson, Walworth and Waukesha Counties.
 Parcels: Wisconsin Statewide Parcel Dataset (V400)
 Waterbodies: USGS NHD
 Roads: Jefferson County and US Census
 Urban Service Area: Jefferson County

Transportation Facilities Inset

Comprehensive Plan
2018-2038

Village of Palmyra
Jefferson County, WI



- Planning Area
 - Village of Palmyra
 - Town
 - Urban Service Area
 - Parcels
- Road Functional Classification
- Minor Arterial
 - Major Collector
 - Minor Collector
 - Local
 - Railroad
 - Ice Age Trail
 - Airport
 - Traffic Count Site
 - 999 (Year) Annual Average Daily Traffic Count

Data Sources:
 Municipal Boundaries: Jefferson, Walworth and Waukesha Counties.
 Parcels: Wisconsin Statewide Parcel Dataset (V400)
 Waterbodies: USGS NHD
 Roads: Jefferson County and US Census
 Functional Classifications: WisDOT (2015 for Jefferson County, 2012 for Waukesha and Walworth Counties)
 Traffic Counts: WisDOT Roadrunner
 Urban Service Area: Jefferson County
 Ice Age Trail: NPS
 Aerial: Jefferson County (2015)

Farmland Classification

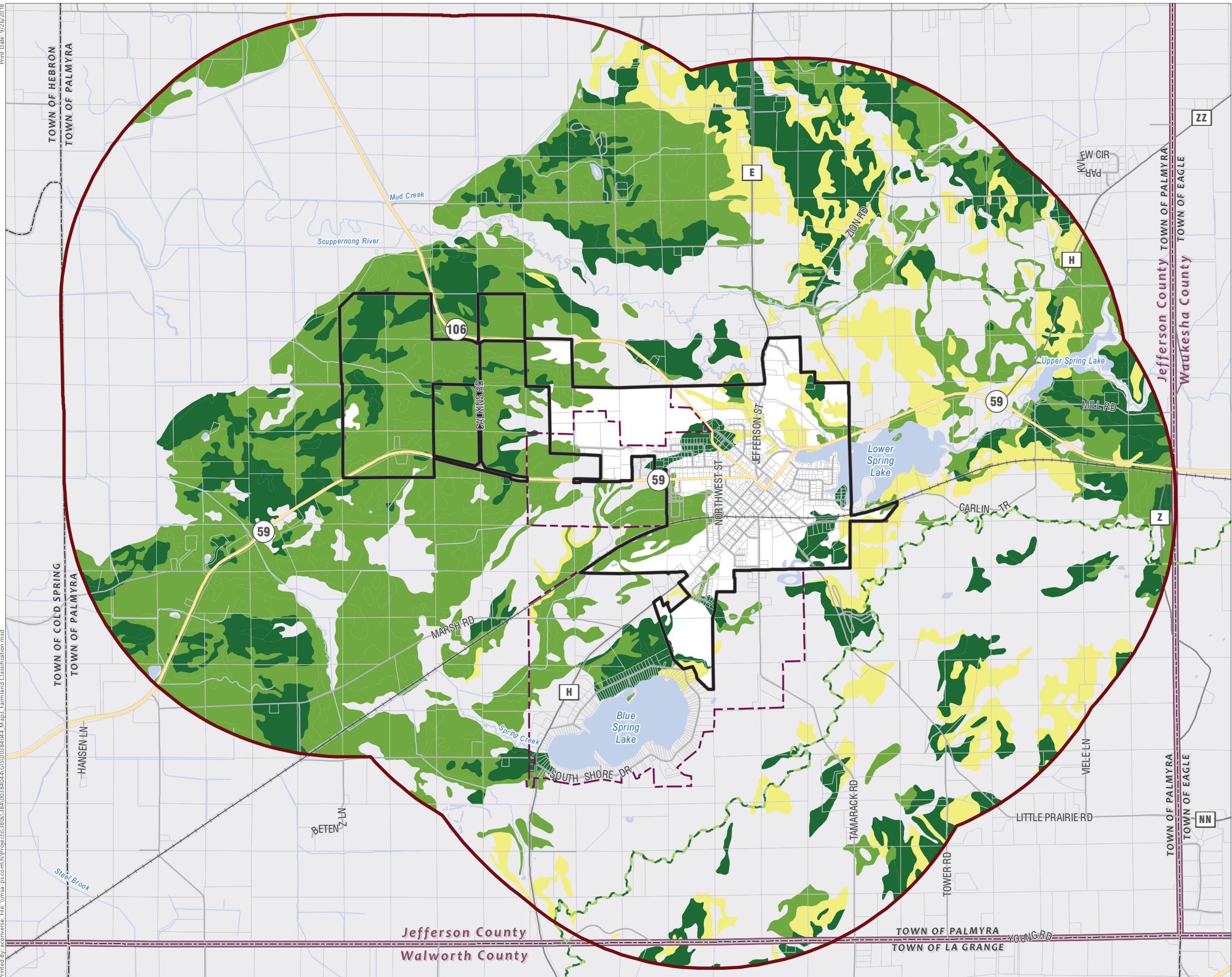
Comprehensive Plan
2018-2038

Village of Palmyra
Jefferson County, WI

- Planning Area
- Village of Palmyra
- Town
- County
- Urban Service Area
- Parcels
- Waterbody
- Railroad
- Ice Age Trail

- Farmland Classification
- All areas are prime farmland
 - Prime farmland if drained
 - Farmland of statewide importance

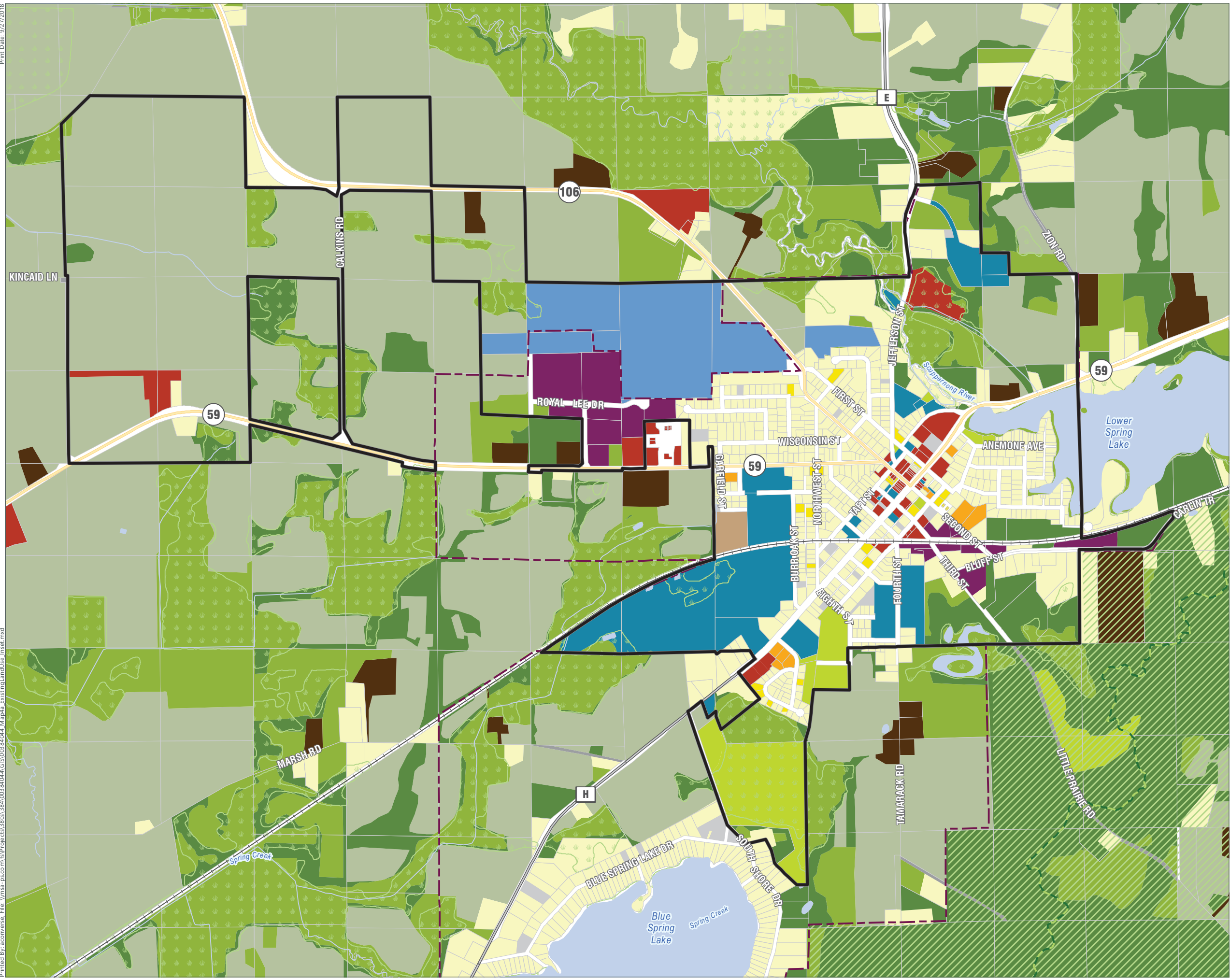
Data Sources:
 Municipal Boundaries: Jefferson, Walworth and Waukesha Counties.
 Waterbodies: USGS NHD
 Roads: Jefferson County and US Census
 Urban Service Area: Jefferson County
 Ice Age Trail: NPS
 Farmland Classification: USDA-NRCS Soils (SSURGO)



Existing Land Use Inset

Comprehensive Plan
2018-2038

Village of Palmyra
Jefferson County, WI



- Planning Area
- Village of Palmyra
- County
- Urban Service Area
- Parcels
- Waterbody
- Railroad
- Ice Age Trail
- Wetlands
- Kettle Moraine State Forest
- Prince's Point Wildlife Preserve

- | | |
|--------------------|----------------------|
| Existing Land Use | Open Space |
| Residential-SF | Woodland |
| Residential-Duplex | Commercial/Office |
| Residential-MF | Industrial |
| Mobile Home Park | Public/Institutional |
| Farmstead | Airport |
| Agricultural | Vacant |
| Parks & Recreation | Transportation |

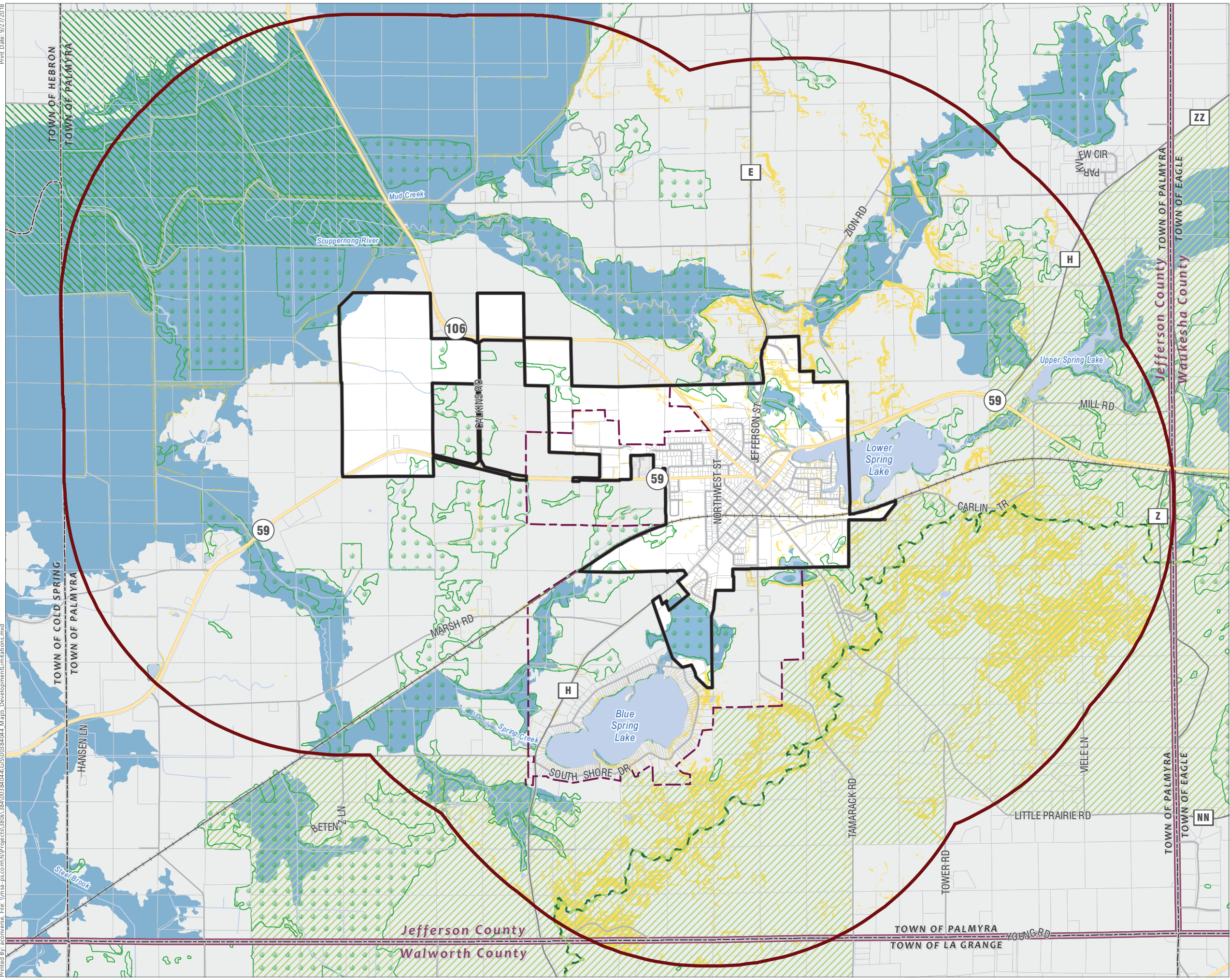
Data Sources:
Municipal Boundaries: Jefferson, Walworth and Waukesha Counties.
Waterbodies: USGS NHD
Roads: Jefferson County and US Census
Urban Service Area: Jefferson County
Ice Age Trail: NPS



Development Limitations

Comprehensive Plan
2018-2038

Village of Palmyra
Jefferson County, WI



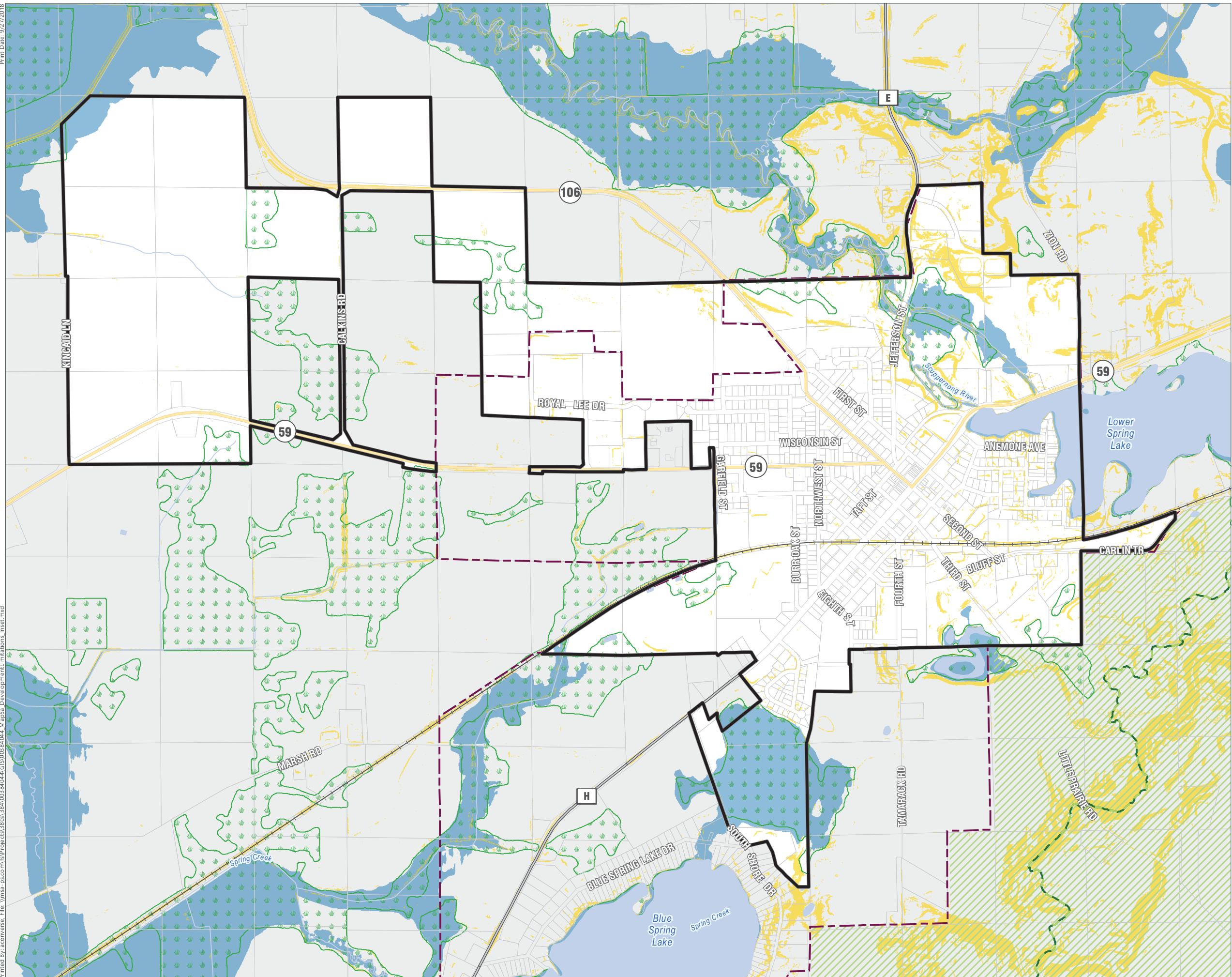
- Planning Area
- Village of Palmyra
- Town
- County
- Urban Service Area
- Parcels
- Waterbody
- Railroad
- Ice Age Trail
- Wetlands
- Floodplain
- Kettle Moraine State Forest
- Prince's Point Wildlife Preserve
- Steep Slopes (20% or Greater)

Data Sources:
 Municipal Boundaries: Jefferson, Walworth and Waukesha Counties.
 Waterbodies: USGS NHD
 Roads: Jefferson County and US Census
 Urban Service Area: Jefferson County
 Ice Age Trail: NPS
 Wetlands: WDNR
 Floodplains: FEMA
 Steep Slopes: Derived from Jefferson and Walworth Co. LiDAR

Development Limitations Inset

Comprehensive Plan
2018-2038

Village of Palmyra
Jefferson County, WI



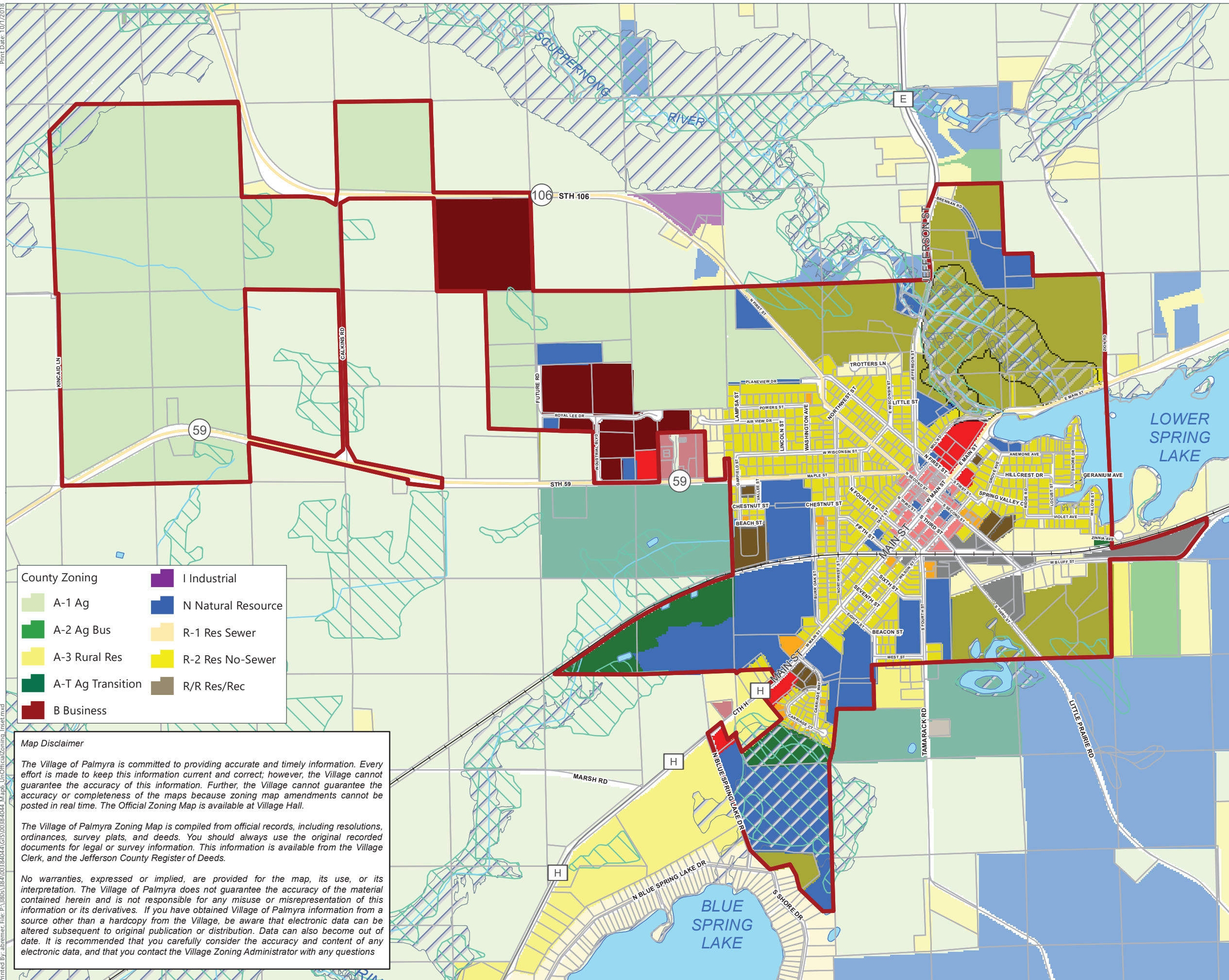
- Planning Area
- Village of Palmyra
- Town
- County
- Urban Service Area
- Parcels
- Waterbody
- Railroad
- Ice Age Trail
- Wetlands
- Floodplain
- Kettle Moraine State Forest
- Prince's Point Wildlife Preserve
- Steep Slopes (20% or Greater)

Data Sources:
 Municipal Boundaries: Jefferson, Walworth and Waukesha Counties.
 Waterbodies: USGS NHD
 Roads: Jefferson County and US Census
 Urban Service Area: Jefferson County
 Ice Age Trail: NPS
 Wetlands: WDNR
 Floodplains: FEMA
 Steep Slopes: Derived from Jefferson and Walworth Co. LiDAR

UNOFFICIAL ZONING

Amendments through 4-2-18

VILLAGE OF PALMYRA
JEFFERSON COUNTY, WI



| | |
|-------------------|--------------------|
| County Zoning | I Industrial |
| A-1 Ag | N Natural Resource |
| A-2 Ag Bus | R-1 Res Sewer |
| A-3 Rural Res | R-2 Res No-Sewer |
| A-T Ag Transition | R/R Res/Rec |
| B Business | |

Map Disclaimer

The Village of Palmyra is committed to providing accurate and timely information. Every effort is made to keep this information current and correct; however, the Village cannot guarantee the accuracy of this information. Further, the Village cannot guarantee the accuracy or completeness of the maps because zoning map amendments cannot be posted in real time. The Official Zoning Map is available at Village Hall.

The Village of Palmyra Zoning Map is compiled from official records, including resolutions, ordinances, survey plats, and deeds. You should always use the original recorded documents for legal or survey information. This information is available from the Village Clerk, and the Jefferson County Register of Deeds.

No warranties, expressed or implied, are provided for the map, its use, or its interpretation. The Village of Palmyra does not guarantee the accuracy of the material contained herein and is not responsible for any misuse or misrepresentation of this information or its derivatives. If you have obtained Village of Palmyra information from a source other than a hardcopy from the Village, be aware that electronic data can be altered subsequent to original publication or distribution. Data can also become out of date. It is recommended that you carefully consider the accuracy and content of any electronic data, and that you contact the Village Zoning Administrator with any questions.

- Municipal Boundary
- Tax Parcels
- Railroad
- Lakes
- Streams
- A-1 - Exclusive Agriculture**
- RH - Rural Holding
- R1-4 Single Family Residential
- R1-5 Traditional Single Family Residential
- R2-6 Plex Residential
- R3-12 Multi-Family Residential
- B1 - Central Business
- B2 - General Business
- B3 - Business Park
- I1 - General Industrial
- PI - Public & Institutional
- C1 - General Conservancy
- PUD - Planned Unit Development Overlay
- FPO - Floodplain Overlay***
- Floodplain Dam Failure Hazard Boundary***

* Refer to the Village of Palmyra Zoning & Development Code for additional information
 **Jefferson County Zoning District, as administered by the Village of Palmyra Zoning & Development Code
 ***Official Floodplain Maps kept on file in Village Hall

Data Sources:
 Base Date: Jefferson County
 Zoning: MSA, Jefferson County

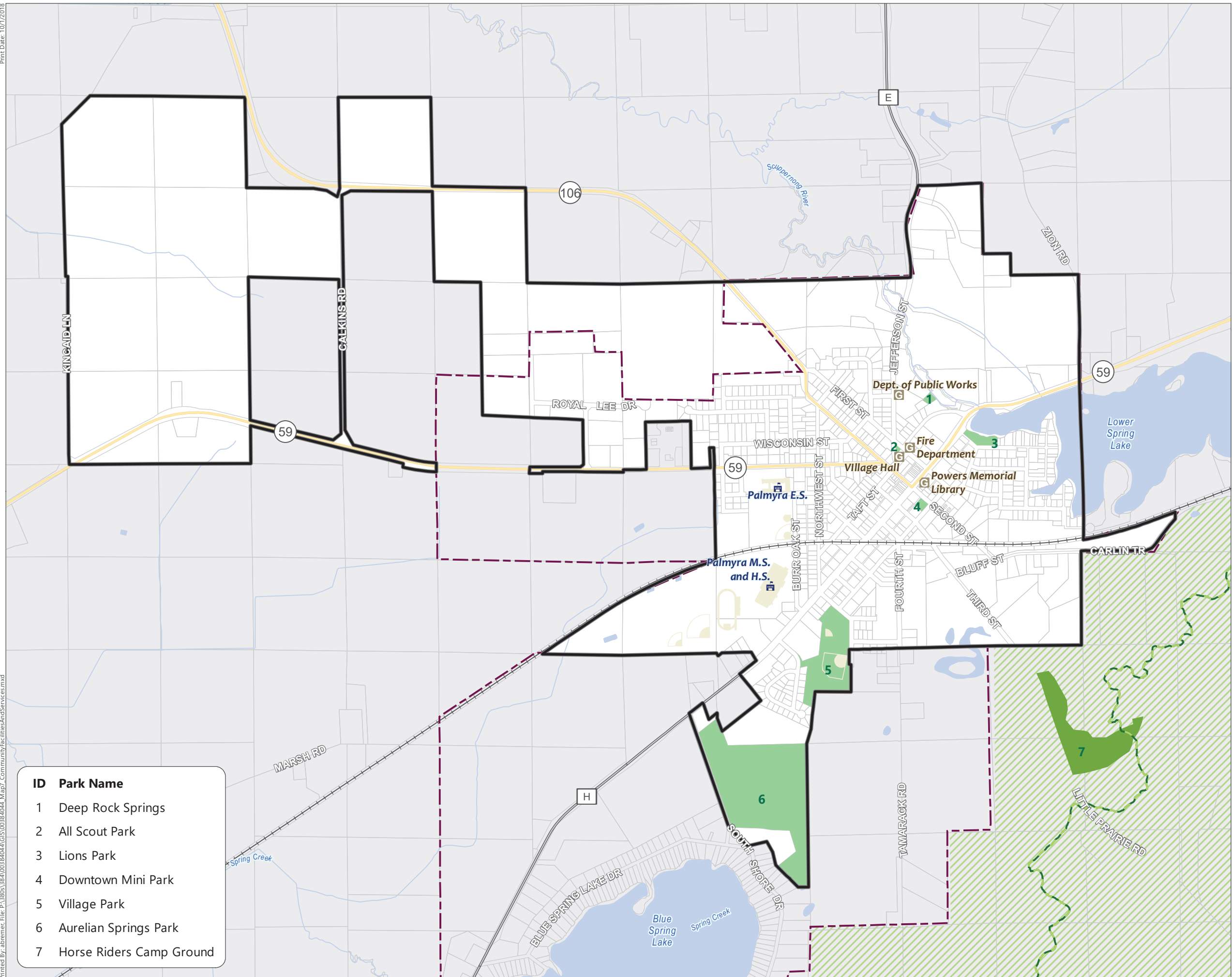
Community Facilities and Services

Comprehensive Plan
2018-2038

Village of Palmyra
Jefferson County, WI

- Planning Area
- Village of Palmyra
- Town
- County
- Urban Service Area
- Parcels
- Parks/Open Space**
 - Village of Palmyra
 - WDNR
 - Waterbody
 - Railroad
 - Ice Age Trail
 - Kettle Moraine State Forest
 - Prince's Point Wildlife Preserve
- Community Facility**
 - Education
 - Municipal Facility

| ID | Park Name |
|----|--------------------------|
| 1 | Deep Rock Springs |
| 2 | All Scout Park |
| 3 | Lions Park |
| 4 | Downtown Mini Park |
| 5 | Village Park |
| 6 | Aurelian Springs Park |
| 7 | Horse Riders Camp Ground |

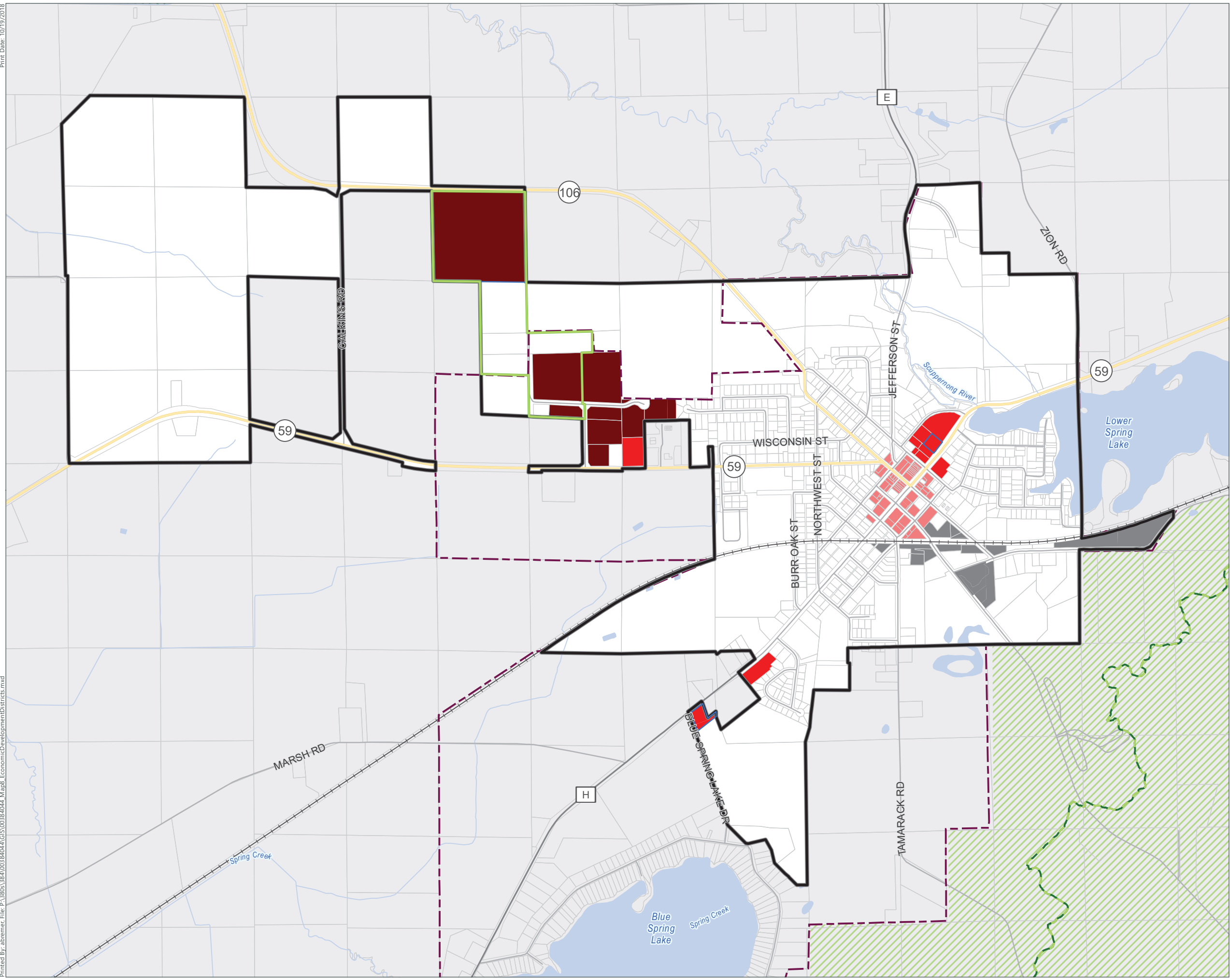


Data Sources:
 Municipal Boundaries: Jefferson, Walworth and Waukesha Counties.
 Waterbodies: USGS NHD
 Roads: Jefferson County and US Census
 Urban Service Area: Jefferson County

Economic Development Districts

Comprehensive Plan
2018-2038

Village of Palmyra
Jefferson County, WI



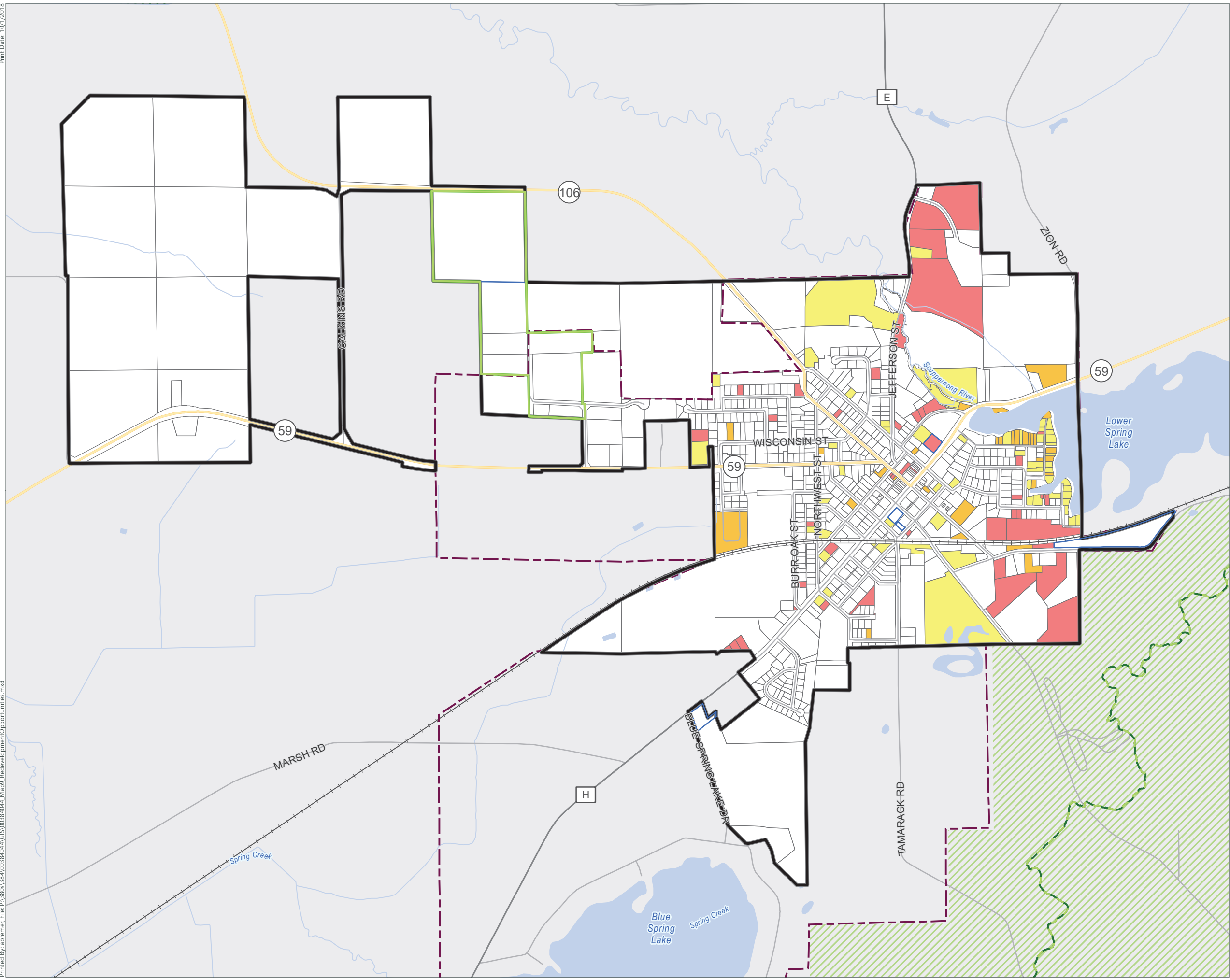
- Planning Area
- Village of Palmyra
- Town
- County
- Urban Service Area
- Parcels
- Waterbody
- Railroad
- Ice Age Trail
- Kettle Moraine State Forest
- Prince's Point Wildlife Preserve
- B1 - Central Business
- B2 - General Business
- B3 - Business Park
- I1 - General Industrial
- Undeveloped, Zoned Business/Industrial
- TID #3 Amended Boundary

Data Sources:
 Municipal Boundaries: Jefferson, Walworth and Waukesha Counties.
 Waterbodies: USGS NHD
 Roads: Jefferson County and US Census
 Urban Service Area: Jefferson County
 Zoning: Village of Palmyra and Jefferson County

Redevelopment Opportunities

Comprehensive Plan
2018-2038

Village of Palmyra
Jefferson County, WI



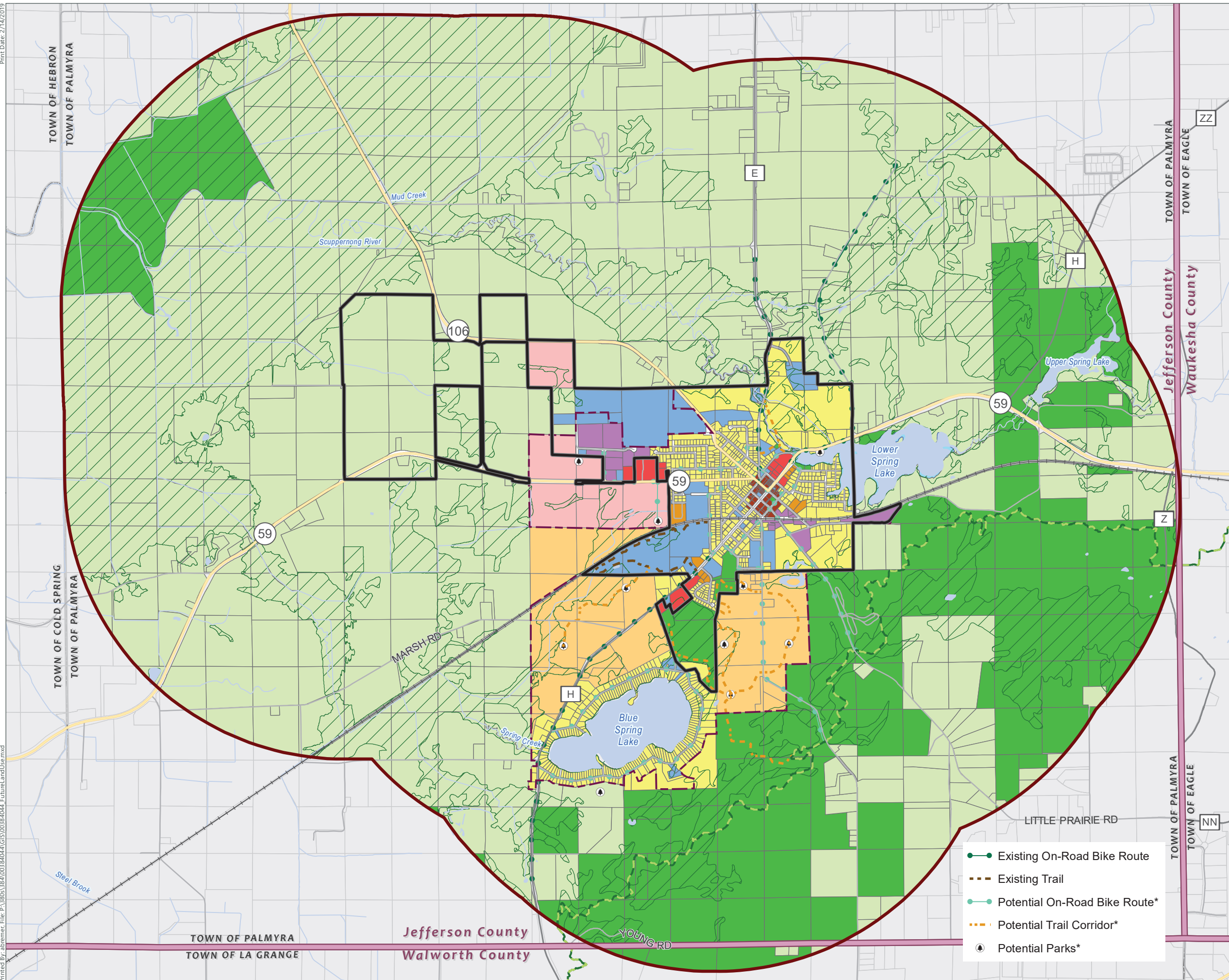
- Planning Area
 - Village of Palmyra
 - Town
 - County
 - Urban Service Area
- Property Value Ratio, Assessment Classes 1-3
- 0.0
 - 0.1-1.0
 - 1.1-2.0
 - >2.1
- Undeveloped, Zoned Business/Industrial
 - TID #3 Amended Boundary
 - Waterbody
 - Railroad
 - Ice Age Trail
 - Kettle Moraine State Forest
 - Prince's Point Wildlife Preserve

Data Sources:
 Municipal Boundaries: Jefferson, Walworth and Waukesha Counties.
 Waterbodies: USGS NHD
 Roads: Jefferson County and US Census
 Urban Service Area: Jefferson County
 Property Value Ratio: Jefferson County (2017 Assessment)

Future Land Use

Comprehensive Plan
2019-2039

Village of Palmyra
Jefferson County, WI



- Planning Area
- Village of Palmyra
- Town
- County
- Urban Service Area
- Parcels
- Railroad
- Ice Age Trail

- Future Land Use**
- Rural Lands
 - Low-Medium Density Residential
 - High Density Residential
 - Planned Neighborhood
 - Downtown Mixed Use
 - Commercial
 - Industrial
 - Planned Business Park
 - Government, Institutional & Utilities
 - Parks, Recreation & Conservancy
 - Water
 - Natural Resource Protection

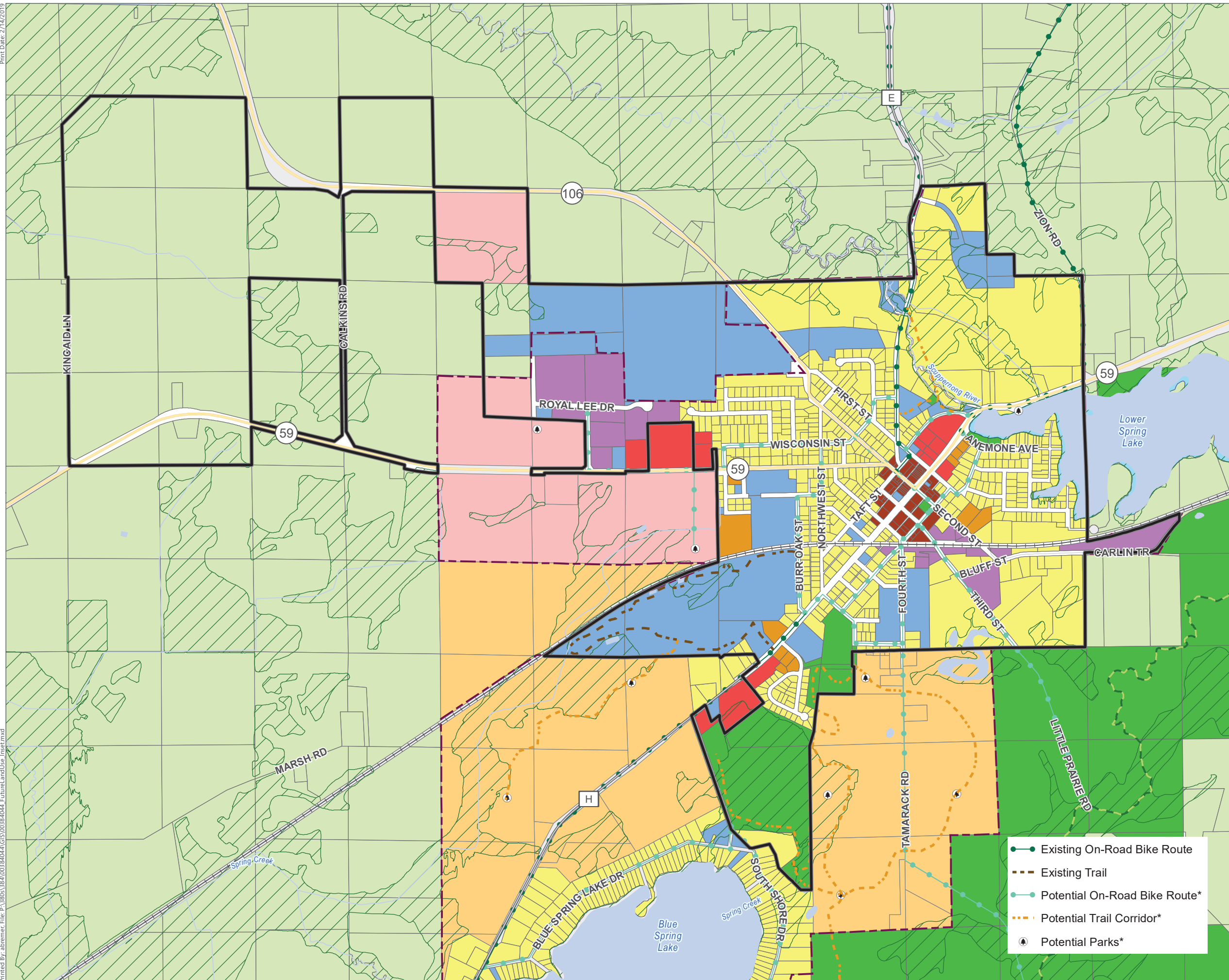
- Existing On-Road Bike Route
- Existing Trail
- Potential On-Road Bike Route*
- Potential Trail Corridor*
- Potential Parks*

Data Sources:
 Municipal Boundaries: Jefferson, Walworth and Waukesha Counties.
 Waterbodies: USGS NHD
 Roads: Jefferson County and US Census
 Urban Service Area: Jefferson County
 Ice Age Trail: NPS
 *Potential Park, Bike Routes and Trails: Palmyra CORP

Future Land Use Inset

Comprehensive Plan
2019-2039

Village of Palmyra
Jefferson County, WI



- Planning Area
- Village of Palmyra
- Town
- County
- Urban Service Area
- Parcels
- Railroad
- Ice Age Trail

- Future Land Use**
- Rural Lands
 - Low-Medium Density Residential
 - High Density Residential
 - Planned Neighborhood
 - Downtown Mixed Use
 - Commercial
 - Industrial
 - Planned Business Park
 - Government, Institutional & Utilities
 - Parks, Recreation & Conservancy
 - Water
 - Natural Resource Protection

- Existing On-Road Bike Route
- Existing Trail
- Potential On-Road Bike Route*
- Potential Trail Corridor*
- Potential Parks*

Data Sources:
 Municipal Boundaries: Jefferson, Walworth and Waukesha Counties.
 Waterbodies: USGS NHD
 Roads: Jefferson County and US Census
 Urban Service Area: Jefferson County
 Ice Age Trail: NPS
 *Potential Parks, Bike Routes and Trails: Palmyra CORP